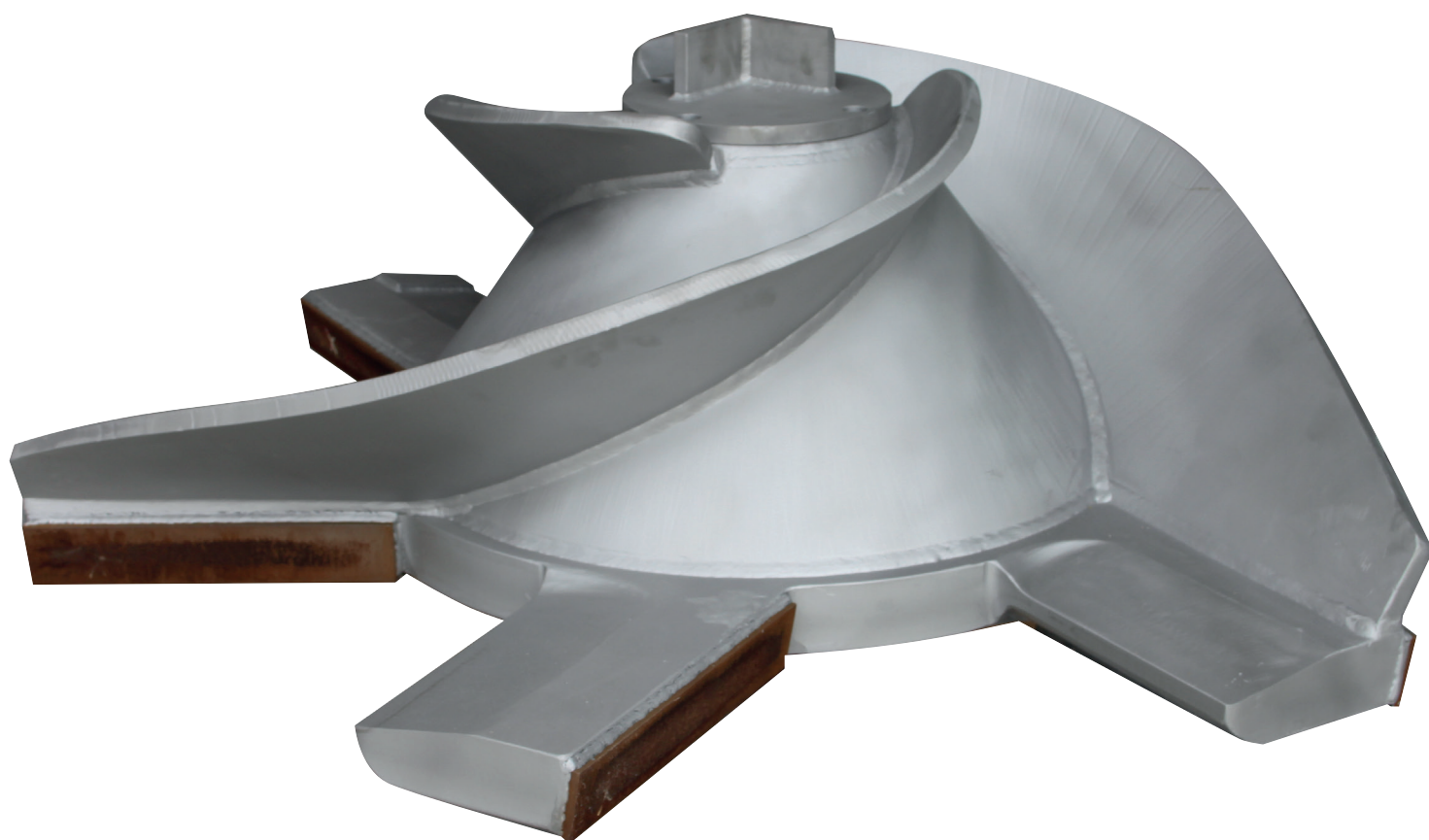


Machinery and Plants for
Paper Industry
Water Treatment Systems



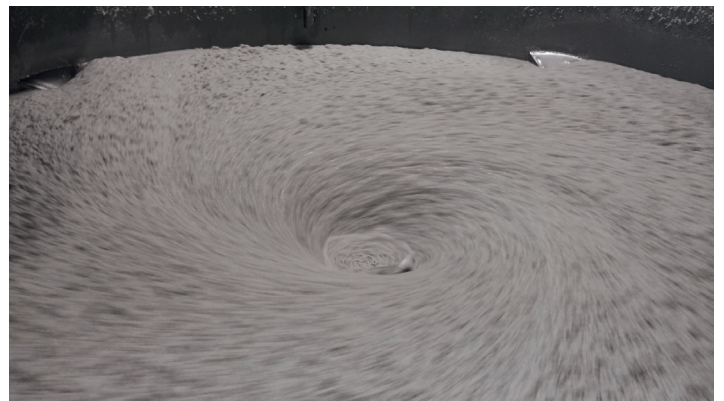
Medium density pulper PMD

Medium density pulpers PMD

ST Macchine medium density pulpers, with an operating consistency of 5 to 8 %, are efficient for the defibering of virgin pulp and waste paper.

Drive can be achieved by “V” belts or gearbox depending on power installed. Impellers of different diameters are designed for lower energy consumptions (compared to traditional types).

The shape of the vat is designed in order to achieve a better pulping results in less pulping time.



Model	PMD06	PMD08	PMD10	PMD12	PMD15	PMD20	PMD25	PMD30	PMD35	PMD40	PMD50	PMD60	PMD70
Net volume [m3]	6	8	10	12	15	20	25	30	35	40	50	60	70
Production [T/D]	20	30	50	60	80	100	120	140	170	190	220	240	270
Max. installed power [kW]	55	90	110	132	160	250	315	355	355	400	500	500	600