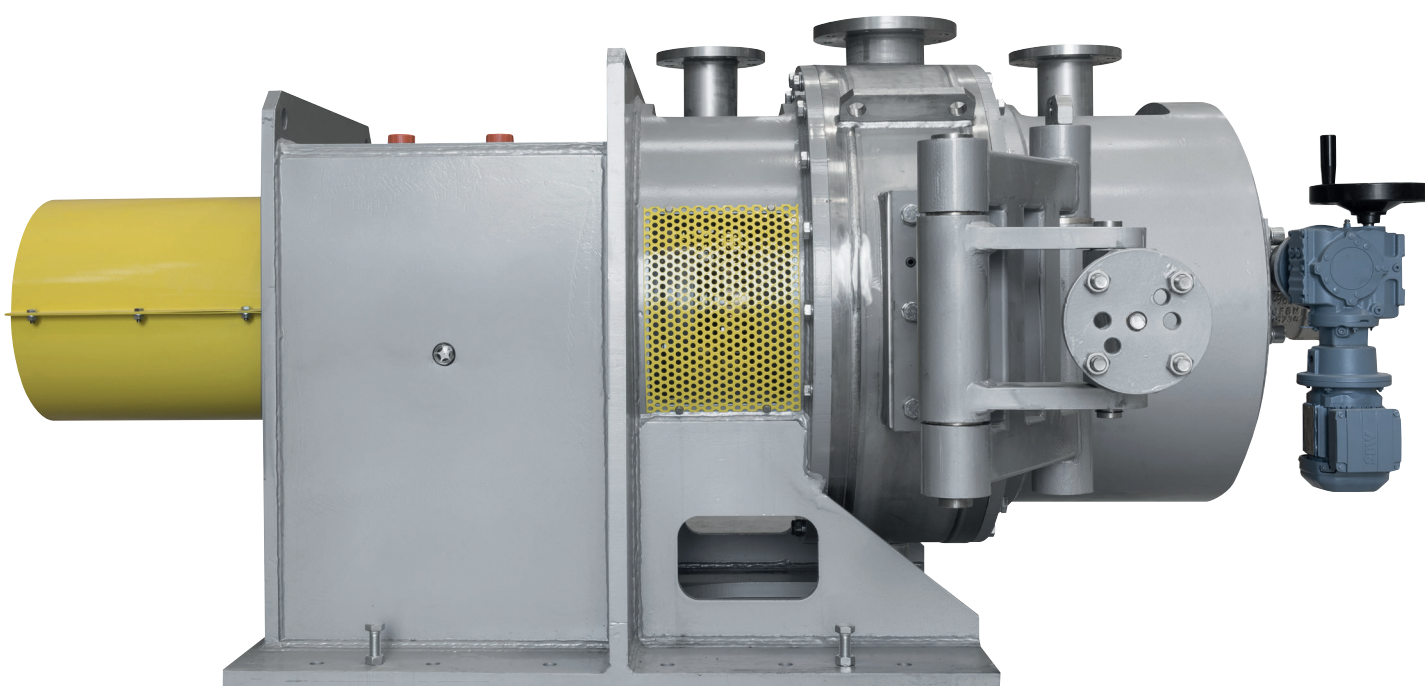


Machinery and Plants for
Paper Industry
Water Treatment Systems

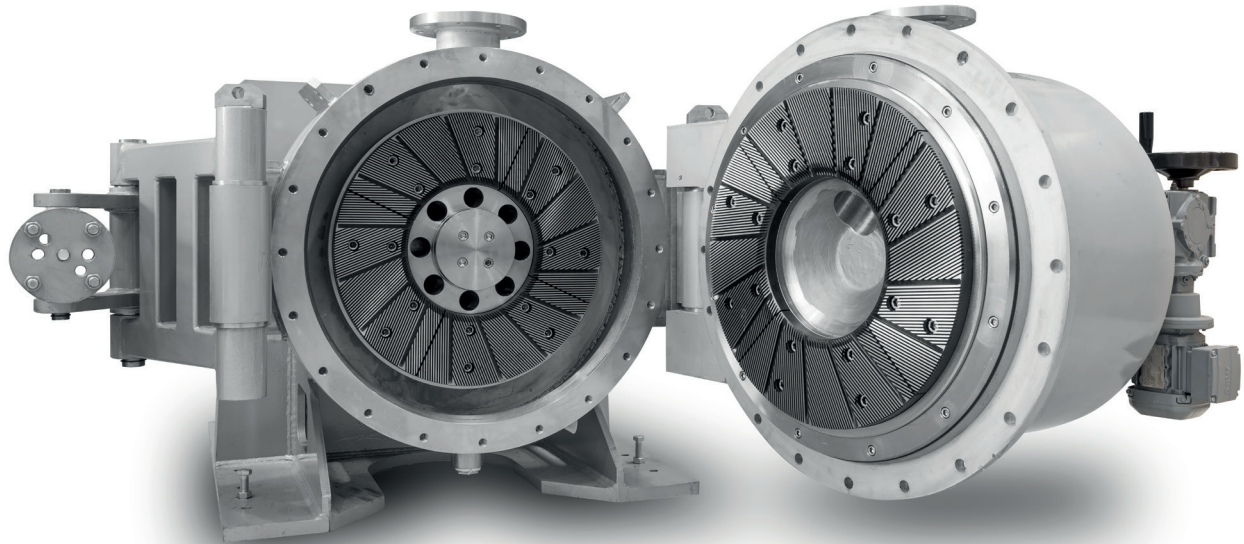


Refiner DDR

Refiner DDR

The **ST Macchine** double disk refiner can work as Monoflow or Duoflow and can be installed both on waste paper or on virgin pulp applications. With the correct dimensioning of the fillings, **ST Macchine** is able to grant the °SR requested by any customer in order to get mechanical characteristics required allowing, at the same time, a very good paper formation.

The machine has a simple and robust structure and is equipped with a special device for an easy change of the fillings. Disk gap is got by means of a special gearmotor with 2 speed arrangements. **ST Macchine** can supply also the control station of the refiner for the constant power intaken by the refiner.



Model	DDR18	DDR20	DDR24	DDR26	DDR30	DDR32	DDR34
Disc diameter [mm - inch]	460 - 18"	510 - 20"	610 - 24"	660 - 26"	760 - 30"	810 - 32"	865 - 34"
Work consistency [%]	4 ÷ 6						
Max. installed power [kW]	250	250	450	450	800	800	800