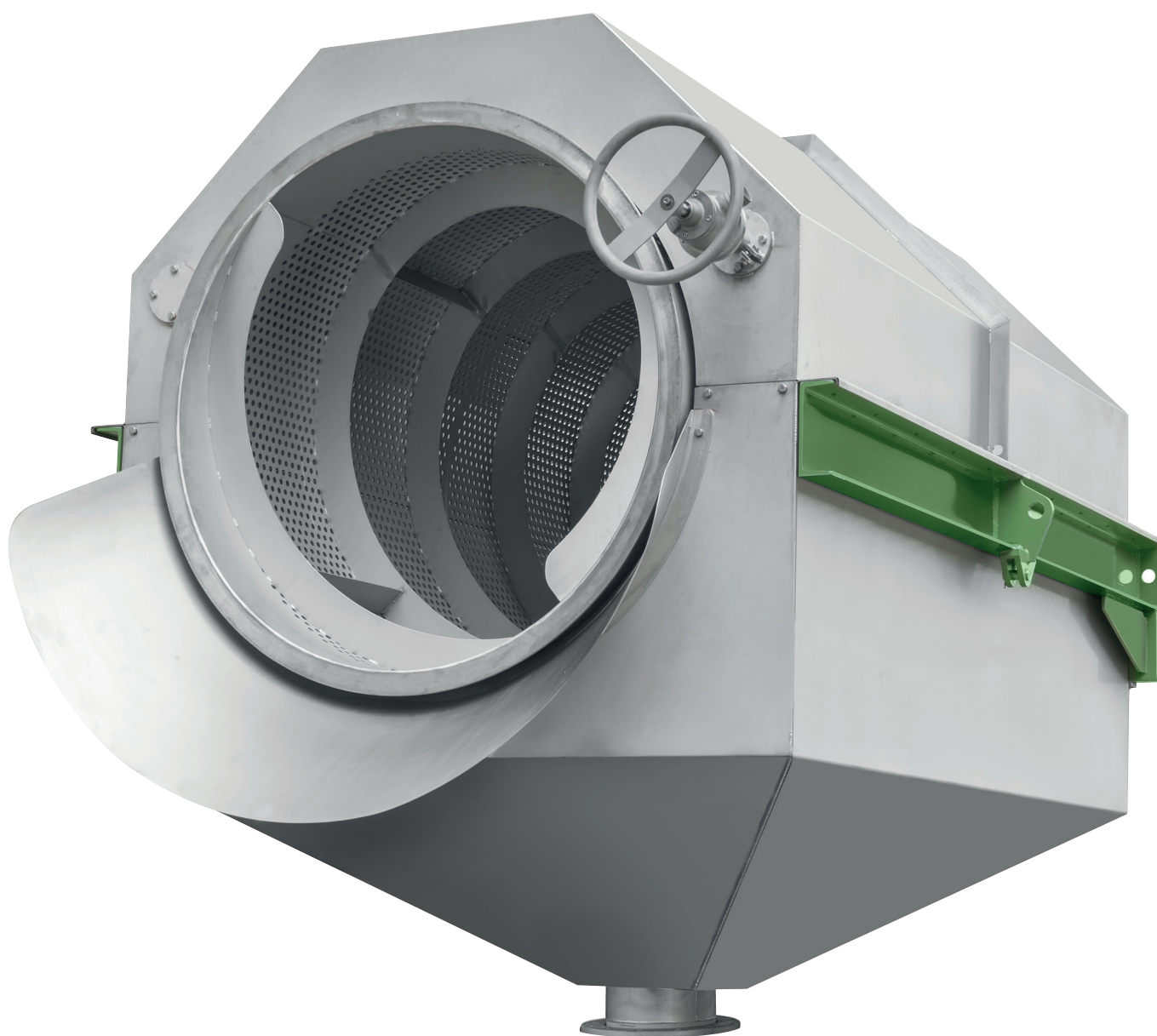


Machinery and Plants for
Paper Industry
Water Treatment Systems

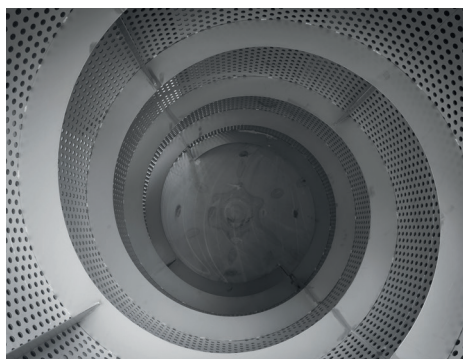


Trommel TLV

Trommel TLV

The contaminants coming from the Pulper washer are treated into a "Trommel" where plastics and other rejects are preliminary dewatered and then sent to a reject press to reduce their volume and weight in order to decrease costs transportation.

The water coming out from the rotating screen drum may be used to feed the pulping unit for the next cycle.



Model	TLV1	TLV2
Diameter [m]	1,2	1,5
Installed Power [kW]	5,5	11