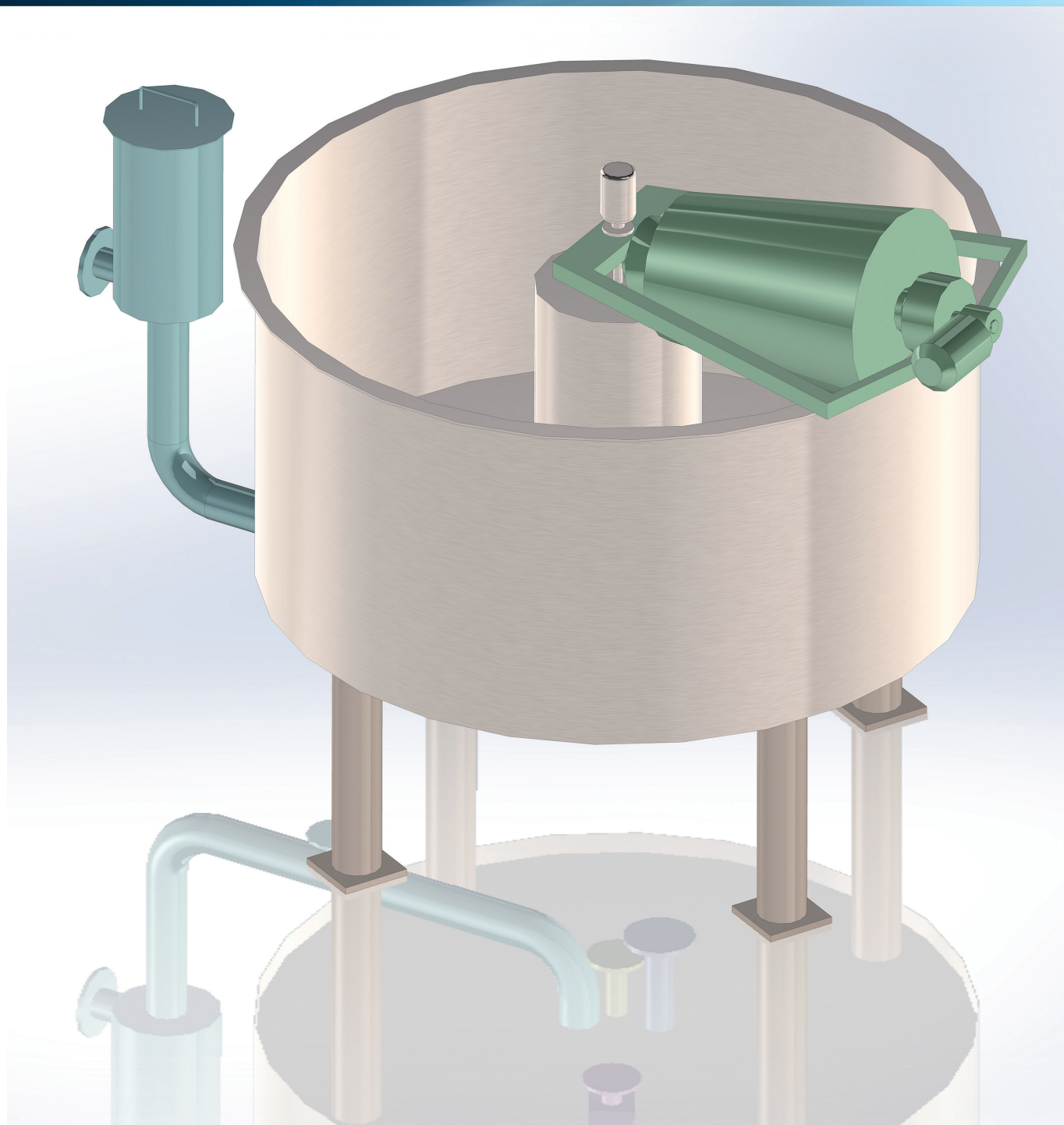


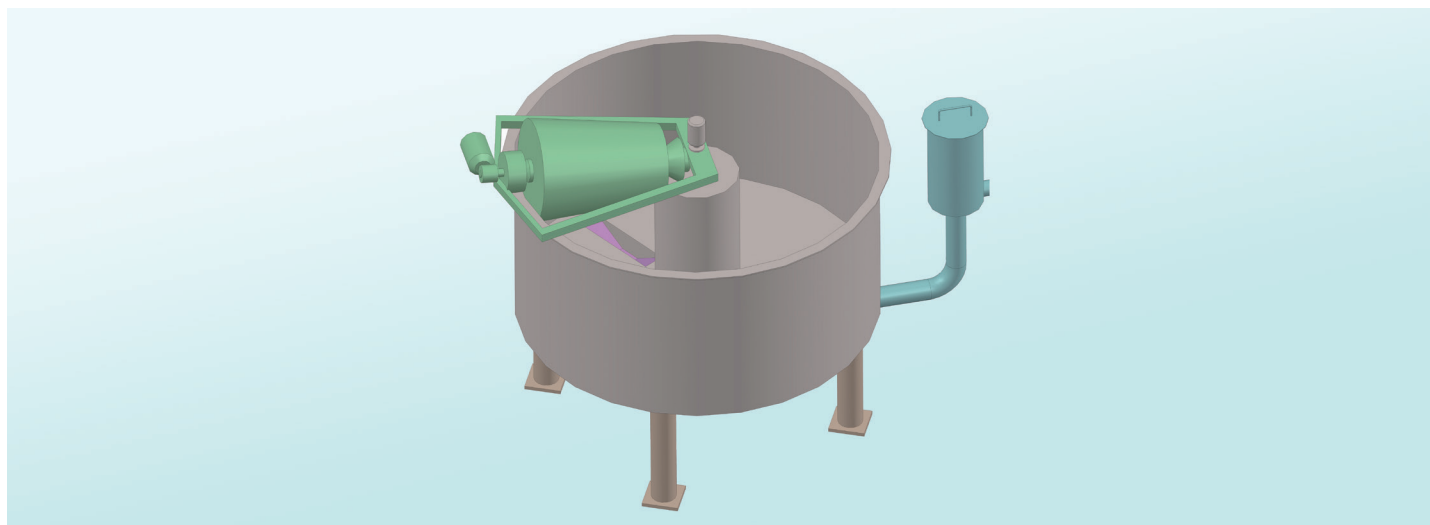
Machinery and Plants for
Paper Industry
Water Treatment Systems



Miniflot CMF
Dissolved Air Flotation Unit

Miniflot CMF

Dissolved Air Flotation Unit



06/2019 Schio
www.zorattistudio.it

The Miniflot is an equipment that, by using the dissolved air flotation technology, is providing the solid – liquid separation.

The floatation tank is circular shaped with self supporting bottom and operate with a low water profile. It results in limited installation space and reduced weight.

The flotation process mode may be operational on partial or full flow of the raw water or recycling flow pressurisation of the clarified water. The mode is evaluated during the project phase.

The flotation unit is fed from the centre of the tank through some openings on the central column and from here the water is evenly distributed in the whole surface.

Each flotation unit is working in combination with a saturator, a high efficiency pressurization system where the air is dissolved into the water in order to generate microbubbles, the responsible of the process.

Before entering the flotation tank, the pressurised water is passing through a suitable valve to reduce the pressure at atmospheric value.

In this phase a huge amount of microbubbles gets free from the water and once inside the tank they are lifting up the suspended solids to the surface.

A rotating skimmer installed on a movable bridge is removing the floated sludge from the surface, pouring it into a central tank from where the sludge is discharged by gravity.

The optimal consistency of the sludge is obtained adjusting the tank water level by acting on the mechanical weir.

The clarified water is extracted from the tank by openings placed in the central chamber and from there conveyed to the level control system.

The settled particles are conveyed by a bottom scraper in a sump in from where they are discharged by an automatic valve. A lateral scraper is installed for the cleaning of the sidewalls of the tank.

Model	Capacity m ³ /h	Tank Diameter mm	Max Width mm	Height mm
CMF 1300	10	1300	2500	1650
CMF 1700	18	1700	2800	1850
CMF 2000	25	2000	3200	2050

S.T. MACCHINE SpA

via Calcara, 1
36030 Monte di Malo (VI) Italy

tel +39 0445 602688
fax +39 0445 605452

www.stmacchine.it
info@stmacchine.it

